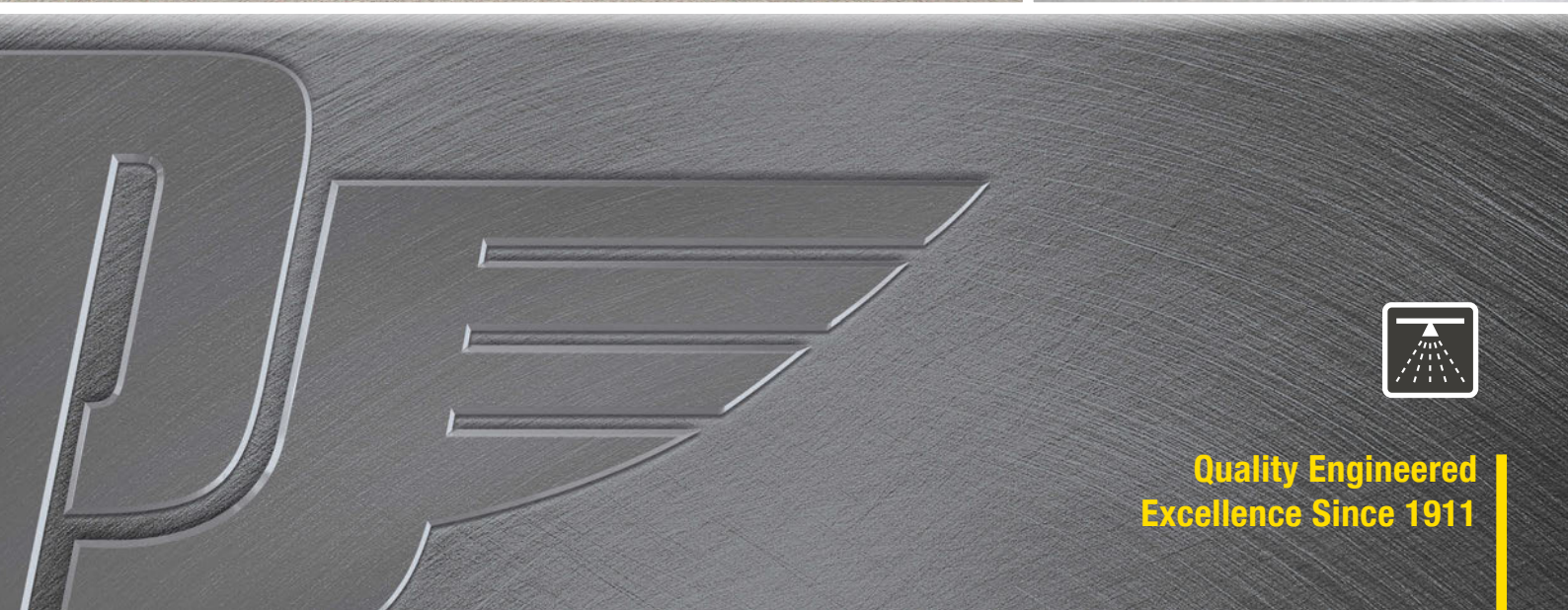
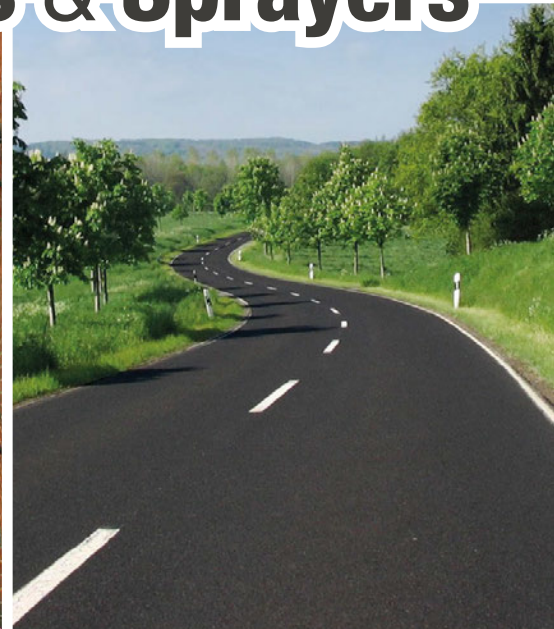




Distributors & Sprayers



Quality Engineered
Excellence Since 1911

Surface Dressing & Bond Coat Distributors

Parker supply a comprehensive range of binder distributors which cover all aspects of bitumen and bitumen emulsion application such as surface dressing and bond coat application. A range of various spraybars enable the customers to meet a wide range of contract requirements.

Tanks

- 3,000 to 18,000 litre tank capacities available.
- Different tank configurations for ease of vehicle mounting.
- 100mm high density insulation clad with stainless or galvanised steel.
- Facilities to load, circulate and discharge product.
- Direct reading contents gauge.
- Internally cross braced with baffles.
- An optional hydraulically driven internal stirrer can be supplied to ensure product remains homogeneous.



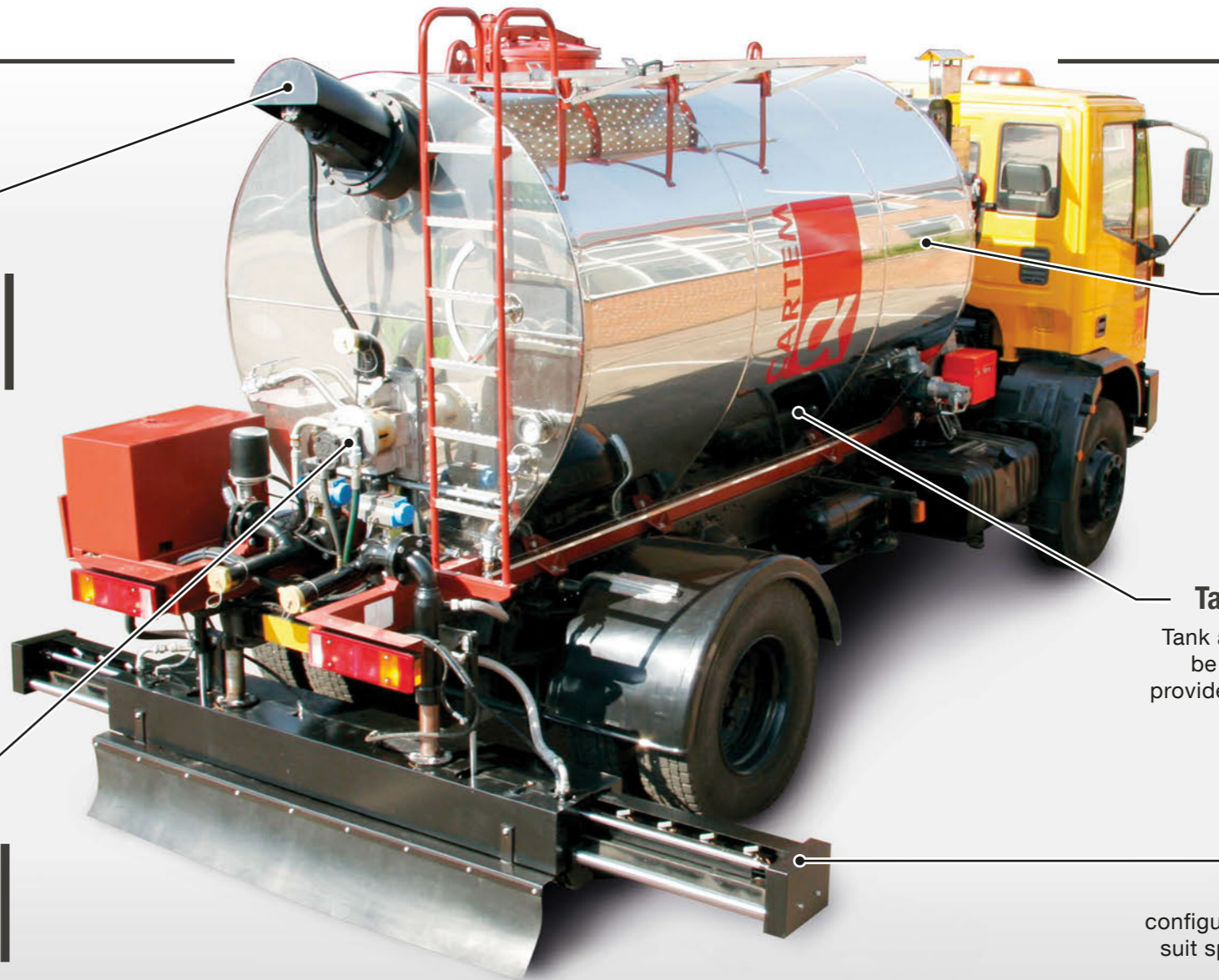
Stirrer (Optional)
Optional stirrer to ensure product remains homogeneous.

Tank Cladding
Stainless or galvanised steel cladding available (stainless steel shown).

Tank & Equipment
Tank and equipment can be factory installed or provided to suit customer supplied chassis.

Pump
Hydraulically driven submerged product pump.

Spraybar
Various spraybar configurations available to suit specific applications (HyEx Bar shown).



Heating Methods

- Fitted with one or two burners depending on tank size.
- Replaceable protective flame tube liners.
- Fully automatic burner system powered by vehicle battery.
- Digital thermostat automatically regulates product temperature.
- Tank low level burner shut off.
- Thermometer fitted to tank for operator reference.



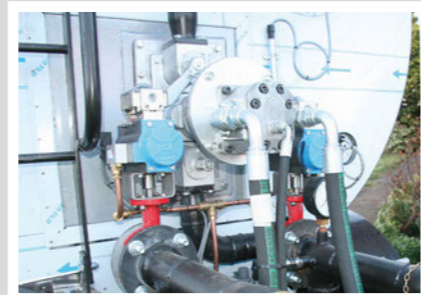
Direct Oil Fired

- Heating coil fitted into the tank for hot oil circulation.
- Removes the risk of localised hot spots degrading product.
- Direct oil fired heat exchange unit.
- Fully automatic burner driven from vehicle battery.
- Digital thermostat automatically regulates product temperature.
- Tank low level burner shut off.
- Thermometer fitted to tank for operator reference.



Indirect Thermal Oil

Pump & Engine

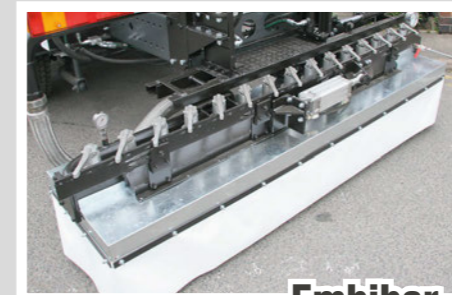


- 550 litres per minute submersible tank mounted pump.
- Hydraulically driven.
- Valves configured to allow loading, off-loading spray bar circulation and spraying.
- Pump driven by 21 kW auxiliary diesel engine.
- Option available to drive pump from a customer supplied vehicle P.T.O.



EcoBar

- A low cost spraybar with a comprehensive specification.
- One man operation.
- Can be supplied as a fixed width bar with or without canopy.
- Also available as a fixed width bar with folding extensions.
- Utilises slot jet technology.
- Pre-selected valves can be pneumatically controlled from the cab.
- Manual operation to raise/lower the spraybar.



Embibar

- A general purpose fixed width spray bar suitable for surface dressing and bond coat work.
- Designed for operation from the rear operator's platform.
- Fitted with Cartem's high quality tangential swirl jets.
- Jets can be supplied with manual or pneumatic valves.
- Suitable for use with bitumen and emulsion.



HyEx Bar

- A highly specified extending spray bar suitable for surface dressing and bond coat work.
- Fully controllable from the cab of the vehicle.
- Optional rear platform and operator controls.
- Utilises slot jet technology with electro-pneumatically operated valves.
- 2.30 metre fixed centre section with left and right hand hydraulically controlled sections giving a maximum spray width of 4.00 metres.
- For use with bitumen or emulsion.

Technical Specifications

		Units	Distributor / Sprayer Configuration								
Size*	Litre		3,000	4,000	6,000	8,000	9,000	10,000	12,000	14,000	18,000
Tank Configurations											
Cylindrical	-	●	●	●	●	-	-	-	-	-	-
Oval	-	○	○	○	○	○	-	-	-	-	-
Maxi	-	-	-	-	-	●	●	●	●	●	●
Heating System¹											
Single Burner Direct Oil Fired	-	●	●	●	●	○	○	○	○	○	○
Twin Burner Direct Oil Fired	-	○	○	○	○	●	●	●	●	●	●
Thermal Oil Heating	-	○	○	○	○	○	○	○	○	○	○
Hydraulically Driven Pump²											
Hydraulic Drive	From Auxiliary Engine	-	●	●	●	●	●	●	●	●	●
	From Vehicle P.T.O.	-	○	○	○	○	○	○	○	○	○

Key:

● = Standard equipment

○ = Optional equipment

* Intermediate sizes can be supplied that have not been listed above. Please contact Cartem for further details.

¹ Power for the burners on the direct oil fired and thermal oil heating systems is supplied by the vehicle batteries.

² Pump flow rate is 550 Litres/mi

		Units	Spraybar Configuration			
Spraybar			Embibar	Ecobar 16	Ecobar 28	HyEx Spray Bar
Description	-		Fixed width spraybar utilising Cartem tangential swirl jets	Fixed width spraybar utilising Cartem slot jets	Spraybar with folding bilateral extension utilising Cartem slot jets	Hydraulically extending spraybar utilising Cartem slot jets
Spray Jet Type	-		Swirl	Slot	Slot	Slot
No. of Jets	-		23	16	28	23
Jet Spacing	mm		106	152	152	176
	inches		4 1/4"	6"	6"	7"
Maximum Spray Width	m		2.44	2.50	4.30	4.00
	inches		96"	98 1/2"	169 1/4"	157 1/2"

Benefits

- Tank capacities from 3,000 to 18,000 litres
- Choice of spray bar types to suit all requirements
- Spray bar widths from 2.44 to 4.30 metres (extended)
- Choice of tangential swirl jets or slot jets
- Options for operation from the vehicle cab or rear platform
- Optional stirrer to maintain homogeneous product

DEALER STAMP

Parker Plant Limited, Canon Street, Leicester, LE4 6GH, United Kingdom

T: +44 (0) 116 266 5999 F: +44 (0) 116 266 4422 W: www.parkerplant.com E: sales@parkerplant.com

All reasonable steps have been taken to ensure the accuracy of this publication. However, due to our policy of continual product development, Parker Plant Limited reserve the right to change details without prior notice. All machines supplied in accordance with our standard conditions. Illustrations and photos may show optional equipment. All rights reserved.