



## Advanced Bitumen Handling Technology:

- Conforms to RBA best practice relating to safety
- Range of heating options available
- Capacities from 30 - 200 tonnes
- Accurate continuous level indication
- 300mm thick high efficiency insulation
- Temperature Indication monitoring
- Independent ultimate high level alarm
- Optional top mounted tank agitator
- Traffic light fill system
- Easy to operate & requires minimal maintenance



# Bitumen Storage

## High Efficiency Vertical Tanks



Quality Engineered  
Excellence Since 1911

# High Efficiency Vertical Bitumen Storage

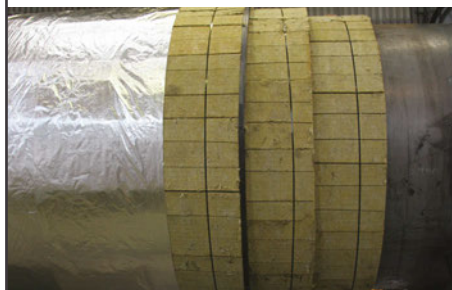
Parker Plant understand that sometimes space within sites is at a premium, and therefore have designed and developed a highly efficient and economical vertical bitumen storage tank. Operational safety and environmental issues are of paramount importance to Parker and so as a result our tank design complies with the Refined Bitumen Association (RBA) regulations. Maintenance/testing of level measurement and high level sensors can be conducted easily from ground level. Operator safety is enhanced throughout the design – filling is monitored via traffic light indication control technology and with the addition of 10% storage capacity built in, the risk of over-filling is significantly reduced.

## Construction



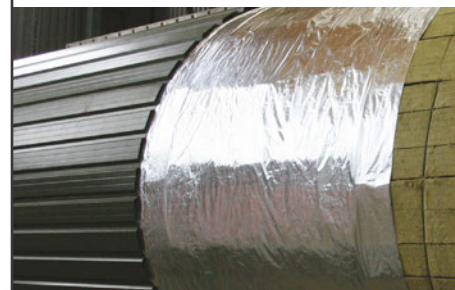
- Fabricated cylindrical tank
- Submerged ARC weld inside & out
- Compliant to current RBA recommendations
- Carbon steel BSEN standard

## High Thermal Insulation



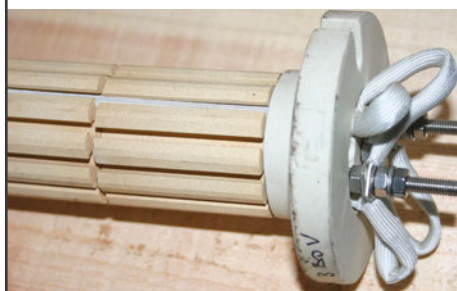
- 300mm high density thermal wool Insulation
- Staggered joints for greater heat retention
- 75mm more Insulation as standard

## Efficient Foil Blanket



- Greater thermal resistance
- Improved energy saving
- Weather-proof material ensures added protection against the elements

## Heating Technology



- 415V removable electric elements
- Ceramic heating technology
- Increased heat transfer
- Easy to replace and maintain
- Totally enclosed heater bank

## Tank Fittings

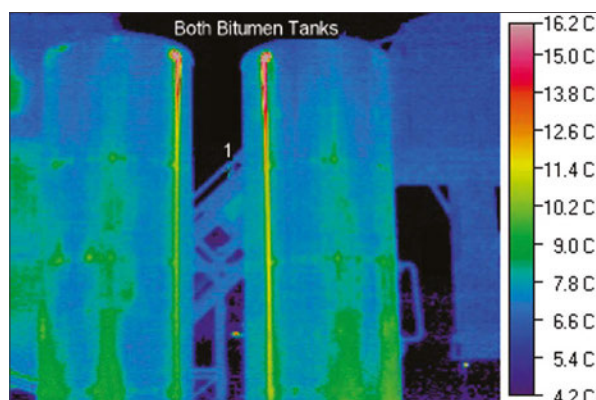


- Guide wave radar level indicator
- High level/low level audio & visual alarms
- Optional agitators for PMB storage
- Optional access ladders

## Pump & Pipe work



- Bitumen pump/valves and bespoke pipe work installations
- Fill point traffic light indicators
- Optional telemetry systems



Thermo graphic image of our high efficiency tanks

## Tank Capacities Available

Tank Capacity [m <sup>3</sup> ]	30	40	50	60	70	80	90	100
Heating System								
Total Load [kW]	48	48	60	60	72	72	80	80
Switching Stages	4	4	5	5	6	6	6	6
Elements	12	12	15	15	18	18	16	16
Siting Details								
Base Diameter [mm]	2500	2750	2750	2750	3000	3000	3350	3350
Ground Loading [Tonnes f/m <sup>2</sup> ]	7.50	8.25	10.00	12.00	11.75	13.25	11.75	13.25

NOTE: Table excludes 150 and 200 tonne capacity tanks, please ask for further details.

Capacities, dimensions and performance data are subject to minor variations and are not contracted descriptions, therefore the company reserve the right to alter specification details as described herein.

**Parker Plant Limited, Viaduct Works, Canon Street, Leicester, LE4 6GH, United Kingdom**

**T: +44 (0) 116 266 5999 F: +44 (0) 116 261 0812 W: www.parkerplant.com E: sales@parkerplant.com**

All reasonable steps have been taken to ensure the accuracy of this publication. However, due to our policy of continual product development, Parker Plant Limited reserve the right to change details without prior notice. All machines supplied in accordance with our standard conditions. Illustrations and photos may show optional equipment. All rights reserved.