



# SiteMix 160

## Static Concrete Batch Plant



Quality Engineered  
Excellence Since 1911

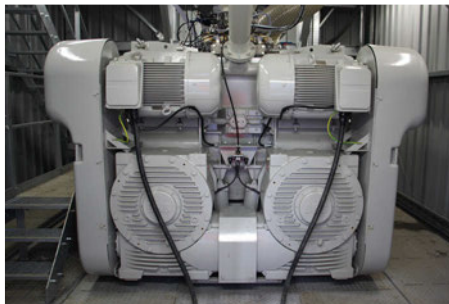
# SiteMix 160 Static Concrete Batch Plant



With a production capacity of up to 160m<sup>3</sup>/h, the Parker SiteMix concrete batching plants modular design can be tailored for ready-mix or pre-cast concrete produced to high quality standards.

Controls on the SiteMix are easy to use, designed to ensure high levels of accuracy, batch repeatability and mix consistency which are vital for the production of high quality, high strength concrete.

The control cabin is pre-wired and fully tested prior to despatch. The SiteMix PLC based control system gives fast, accurate measurement of mix ingredients, as well as monitoring dynamic aspects of the plant for continuous and safe operation.



| Specification                           |                    |               |
|---|--------------------|---------------|
|   | Units              |               |
| <b>Capacity</b>                         |                    |               |
| Output Capacity                         | m <sup>3</sup> / h | 160           |
| <b>Aggregate Hopper</b>                 |                    |               |
| Compartments                            |                    | 4             |
| Compartment Capacity                    | m <sup>3</sup>     | 4 x 35        |
| Total Capacity                          | t                  | 224           |
| <b>Aggregate Weigh Conveyor</b>         |                    |               |
| Belt Width                              | mm                 | 1200          |
| Conveyor Drive                          | kW                 | 2 x 18.5      |
| <b>Inclined Aggregate Feed Conveyor</b> |                    |               |
| Belt Width                              | mm                 | 1200          |
| Conveyor Drive                          | kW                 | 45            |
| <b>Aggregate Feed Hopper</b>            |                    |               |
| Capacity                                | kg                 | 15,000        |
| <b>Mixer</b>                            |                    |               |
| Mixer Typer                             | -                  | Twin Shaft    |
| Capacity (Compacted / Dry)*             | L                  | 6,000 / 9,000 |
| Mixer Drive                             | kW                 | 2 x 110       |
| <b>Cement Silo</b>                      |                    |               |
| No. of Cement Silos                     | -                  | 2             |
| Capacity                                | t                  | 3 x 100       |
| Cement Feed Screws                      | kW                 | 3 x 18.5      |
| <b>Weigh Hoppers</b>                    |                    |               |
| Cement Weigh Hopper Capacity            | kg                 | 3,250         |
| Water Weigh Hopper Capacity             | L                  | 2,500         |
| <b>Water System</b>                     |                    |               |
| Water Pump Drive                        | kW                 | 3             |
| <b>Compressor</b>                       |                    |               |
| Compressor Power                        | kW                 | 7.5           |
| Pressure                                | bar                | 6.5           |
| <b>Control House</b>                    |                    |               |
| Dimensions                              | m                  | 4 x 2,4       |

\* Depending on bulk density of raw materials

Parker Plant Limited, Viaduct Works, Canon Street, Leicester, LE4 6GH, United Kingdom

T: +44 (0) 116 266 5999 F: +44 (0) 116 261 0812 W: [www.parkerplant.com](http://www.parkerplant.com) E: [sales@parkerplant.com](mailto:sales@parkerplant.com)

All reasonable steps have been taken to ensure the accuracy of this publication. However, due to our policy of continual product development, Parker Plant Limited reserve the right to change details without prior notice. All machines supplied in accordance with our standard conditions. Illustrations and photos may show optional equipment. All rights reserved.