



# Tracked Jaw Crushers



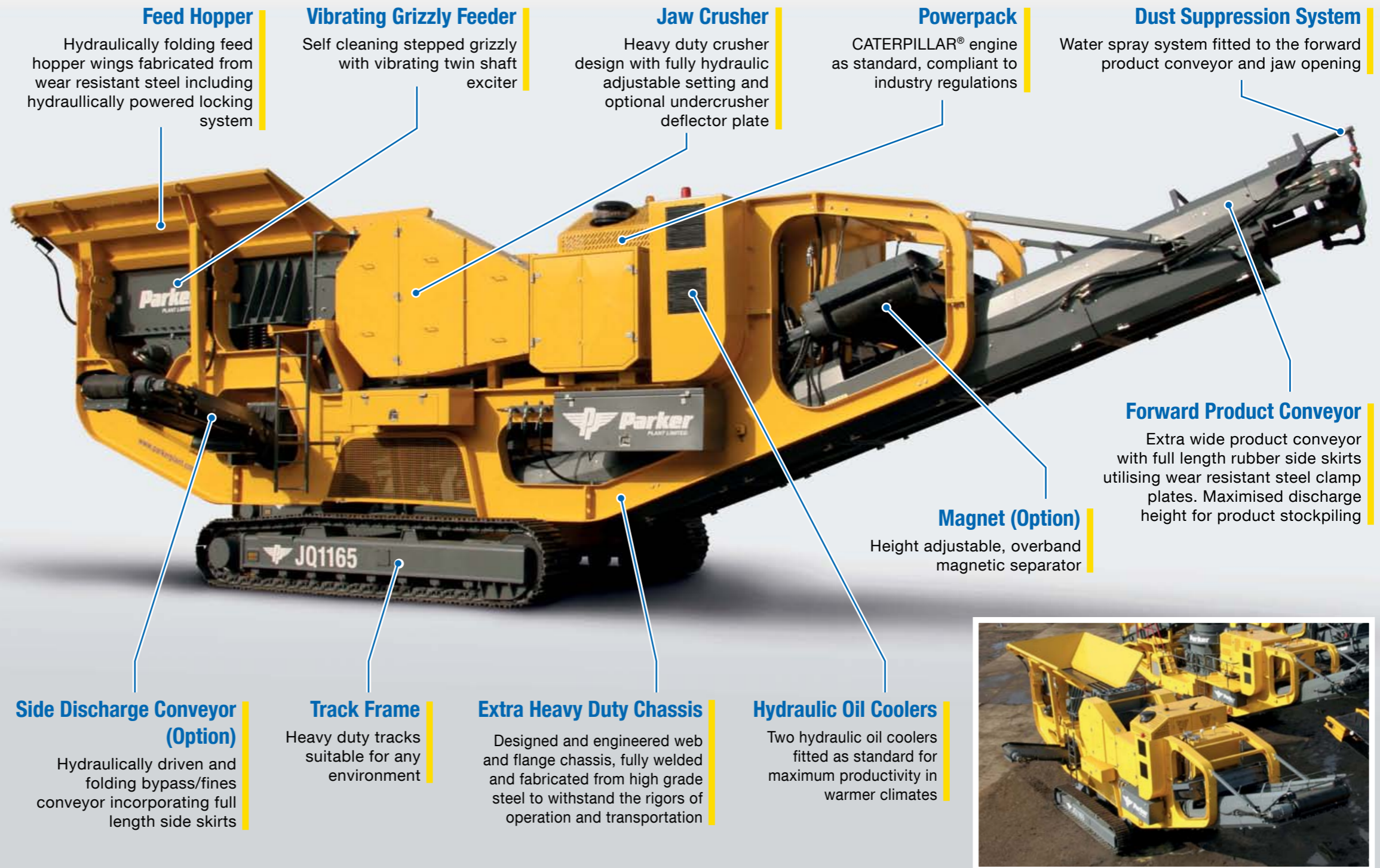
Quality Engineered  
Excellence Since 1911



Parker tracked jaw crushers are available in a range of sizes and are fitted with world renowned RockSizer or RockSledger jaw crushers. The single toggle crushing action and design of jaw stock geometry perfected over many years gives impressive outputs when crushing even the hardest of materials. Where high capacities, reliability and excellent manoeuvrability are required, Parker tracked jaw crushers will perform.

## Options

- |   |   |
|---|---|
| <u>Product Conveyor Weigh Scale</u>       | <u>Hydraulic Breaker Arm (Bolted)</u>       |
| <u>Wear Resistant Steel Hopper Liners</u> | <u>Overband Magnet</u>                      |
| <u>Feed Hopper Extension Wings</u>        | <u>Side Discharge Conveyor</u>              |
| <u>Centralised Lubrication System</u>     | <u>Undercrusher Deflector Plate</u>         |
| <u>Product Conveyor Dust Covers</u>       | <u>Increased Fuel Tank Capacity</u>         |
| <u>Higher &amp; Wider Track Kit</u>       | <u>Remote Diesel Fill Pump</u>              |
| <u>Hydraulic Water Pump</u>               | <u>Arctic (-20°C) or Desert (50°C) Pack</u> |
| <u>Engine Bay Fire Suppression</u>        | <u>Remote Located Service Centre</u>        |



## Tracked Jaw Range



JR0745



JR0960



JQ1165



JQ1180



JQ1310

# Technical Specifications

	Units	JR0745	JR0960	JQ1165	JQ1180	JQ1310
	mm	11110	12510	14730	15040	17000
	ft / ins	36' 5"	41'	48' 4"	49' 4"	55' 9"
	mm	3900	4200	4340	4440	4940
	ft / ins	12' 9"	13' 9"	14' 3"	14' 7"	16' 2"
	mm	3300	4100	4250	5120	6350
	ft / ins	10' 10"	13' 9"	13' 11"	16' 10"	20' 10"
	mm	11485	12800	15050	15340	17300
	ft / ins	37' 8"	42'	49' 4"	50' 4"	56' 9"
	mm	2500	2700	2800	3000	3500
	ft / ins	8' 2"	8' 10"	9' 2"	9' 10"	11' 6"
	mm	3000	3600	3600	3600	4650
	ft / ins	9' 10"	11' 10"	11' 10"	11' 10"	15' 3"
	mm	2610	2910	3350	3520	3600
	inches	103"	115"	132"	139"	142"
	mm	1740	2000	2100	2100	2400
	inches	69"	79"	83"	83"	94"
	mm	800	1000	1200	1200	1500
	inches	31"	39"	47"	47"	59"
	mm	500	600	600	600	600
	inches	20"	24"	24"	24"	24"
	mm	700 x 450	900 x 600	1100 x 650	1100 x 800	1300 x 1050
	inches	28" x 18"	35" x 24"	43" x 26"	43" x 31"	51" x 41"
	kg	25,000	30,000	48,000	55,000	97,000
	lbs	55,000	66,000	105,600	121,000	213,400

## Benefits

- Robust and durable crushers featuring rapid setup times
- High throughput capacity and large reduction rates
- Hydraulically adjustable crusher settings
- Advanced electronic control system interface
- Easily accessible maintenance and service points
- Simple hydraulic circuits
- Efficient CATERPILLAR® powerpack designed for low operating cost
- Global aftersales service, support and spare parts supply



DEALER STAMP

Parker Plant Limited, Canon Street, Leicester, LE4 6GH, United Kingdom

T: +44 (0) 116 266 5999 F: +44 (0) 116 266 4422 W: [www.parkerplant.com](http://www.parkerplant.com) E: [sales@parkerplant.com](mailto:sales@parkerplant.com)

All reasonable steps have been taken to ensure the accuracy of this publication. However, due to our policy of continual product development, Parker Plant Limited reserve the right to change details without prior notice. All machines supplied in accordance with our standard conditions. Illustrations and photos may show optional equipment.